

Advanced ASFS 24-762-3350-110

Specifications

Marka	Advanced
Typ	ASFS 24-762-3350-110
Czynnik chłodzący	NH 3 (ammonia)
Rozmiary	8500x5500x3750 mm (LxWxH)
Uwagi	Y.o.b. 2010
Maximum product height	60 mm
Tiers	24
height infeed / outfeed	In: 170 mm, out: 2800 mm
Total effective belt length	310,4 m
Effective belt width	711,2 mm
Stock	1



Description

Used Advanced ASFS 24-762-3350-110

Used and in excellent condition Advanced ASFS 24-762-3355-110 spiral freezer with 24 tiers. North-south enter-exit. Effective belt width 711,2 mm and maximal product height 60 mm. Belt surface 214,3 m². Drum motor on top of the spiral. Evaporator stainless steel 175 kW with 3 Nuaire fans 4 kW - 1445 RPM. This spiral is inside completely seamless welded. Control panel with Siemens touch panel and 3 Sew Eurodrive movitrec frequency regulators.

1.810 kg/h hamburgers in 30 minutes (110 grams/piece) +2°C to -20°C.

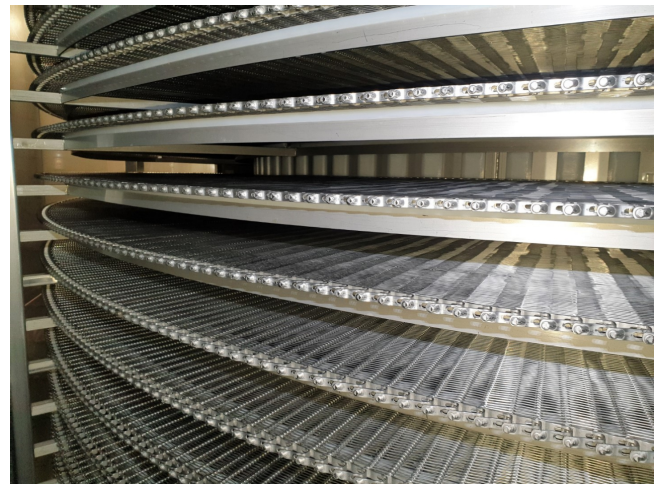
1.125 kg/h hamburger in 40 minutes (110 grams/piece) +60°C to -20°C.

1.575 kg/h chicken filet in 85 minutes (200 grams/piece) +4°C to -18°C.

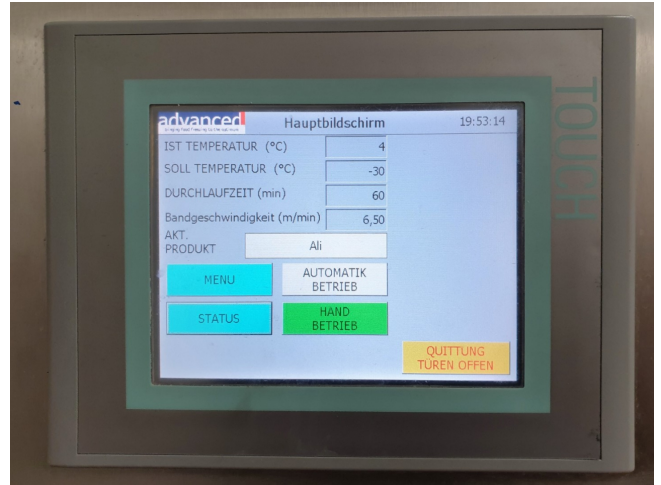


1.675 kg/h ice cream trays in 45 minutes (72 grams/piece) -4°C to -20°C.











Advanced ASFS 24-762-3350-110

Product	Product sizes (mm)	Product weight (gram)	T in °C	T out °C	Freezing time (min)	Total capacity (kg/h)
Hamburger	125 x 125 x 10	110	2	-20	30	1810
Hamburger 60°C	125 x 125 x 10	110	60	-20	40	1125
Half chickenfilet	140 x 55 x 30	200	4	-18	85	1575
Drumstick	120 x 70 x 35	125	4	-18	75	1410
Chicken nuggets	40 x 30 x 20	30	40	-20	60	1085
Chicken schnitzel	140 x 70 x 15	100	7	-20	45	1450
Pork schnitzel	220 x 125 x 15	165	7	20	42	1460
Croissant	110 x 50 x 35	70	50	-18	45	1400
Pisoleit	125 x 40 x 35	80	40	-18	40	1675
Mini ice cream	80 x 80 x 50	72	-4	-20	45	1675
Ice cream	180 x 100 x 70	520	-4	-20	90	1290